

Mechanics of administering Creo Elements/Pro

Presented by Blaine Prout





Blaine Prout

Technical Account Manager
EAC Product Development Solutions

bprout@eacpds.com

888-225-7579 x172



27 years industry experience:

- 6 years designing on “the board”
- Early adopter of CAx tools, from ECAD thru MCAD in the 1980s
- Early adopter of 3D parametric modeling w/PTC in 1990, Version 6
- Early adopter of **Data Management** → **PDM** → **PLM** and this market segment evolution since inception
- 19 years using, administrating, architecting implementations, as well as training in most PTC products
- Certified PTC Instructor



Mechanics of Pro/E Admin

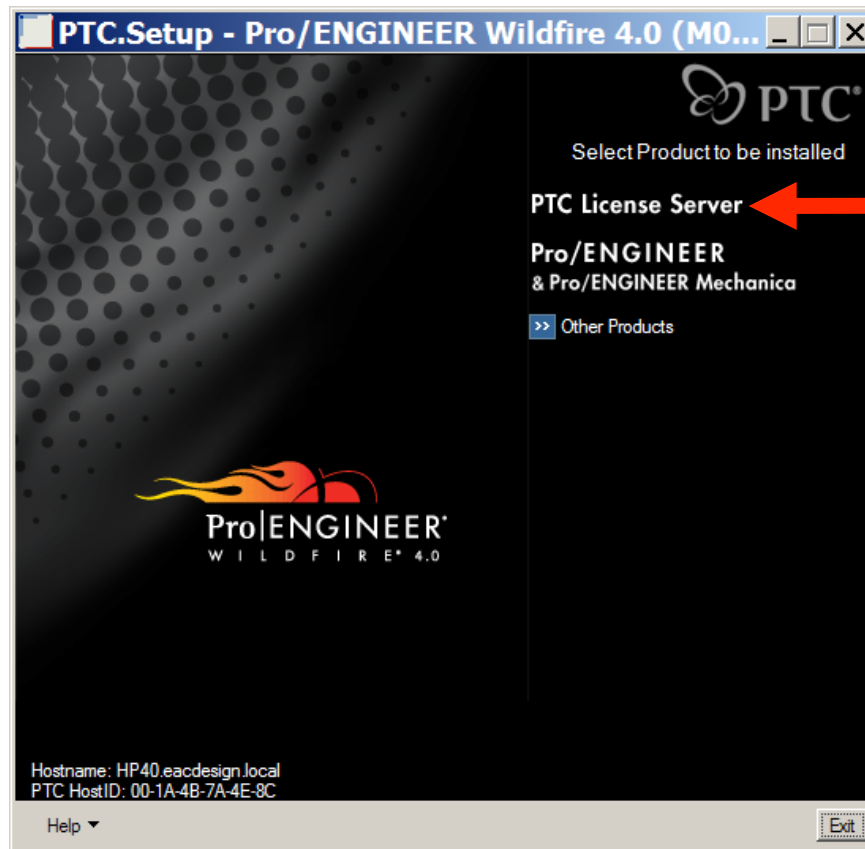
Agenda

- Installation – Server and client & post installation tasks/options
- Hardware - Network/server & Client, PCs vs. Workstations
- Graphics Drivers
- Training Options
- Legacy data options - older versions of PTC, or other CAD systems
- Common parts & shared files
 - Config.pro and config.sup
 - Drawing.dtl
- Online resources – www.ptc.com, www.proesite.com, www.ptcuser.org,

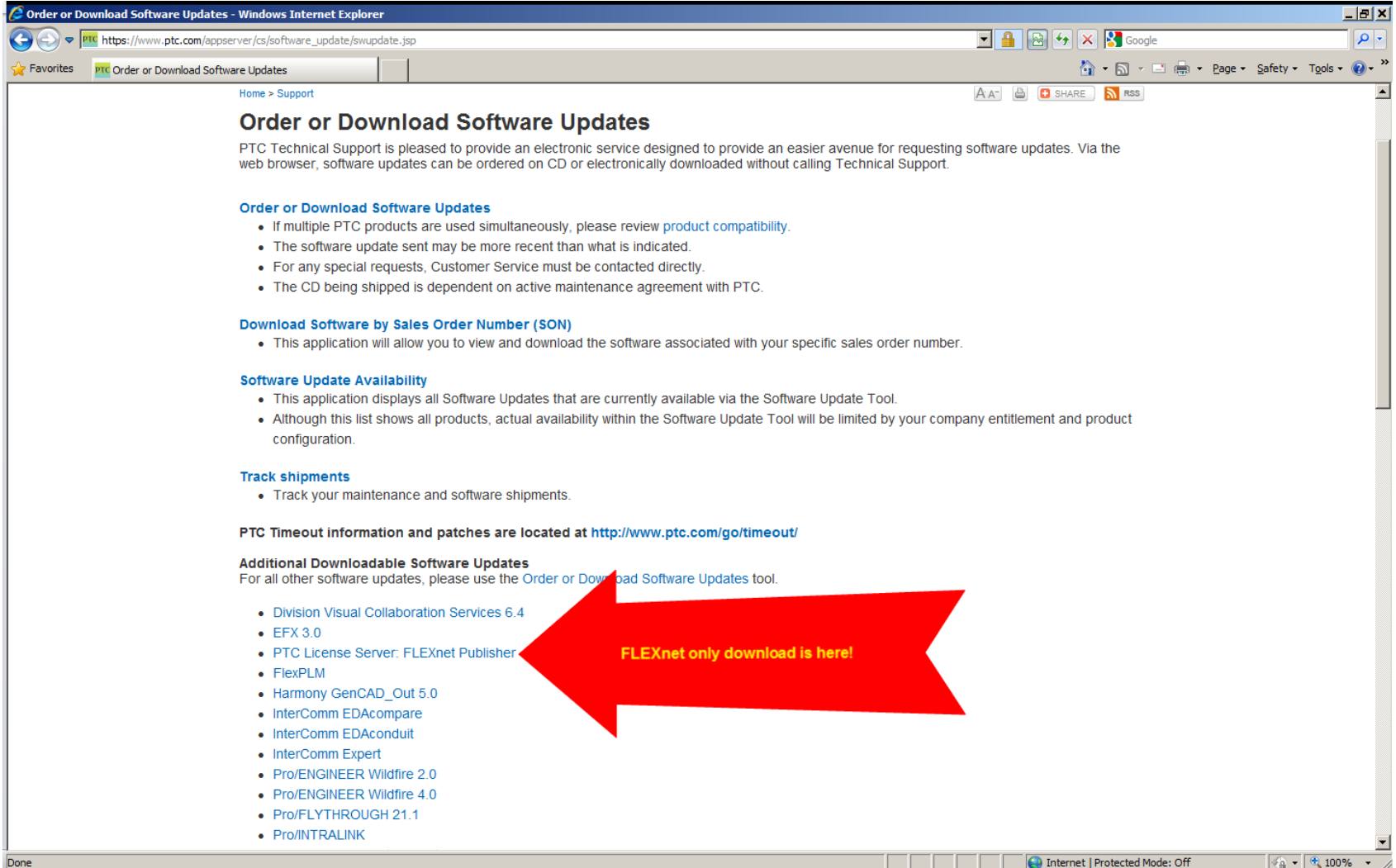


Installation – Server

Server: You can do a lightweight/”server only” install



FLEXnet can be downloaded by itself



Order or Download Software Updates

PTC Technical Support is pleased to provide an electronic service designed to provide an easier avenue for requesting software updates. Via the web browser, software updates can be ordered on CD or electronically downloaded without calling Technical Support.

Order or Download Software Updates

- If multiple PTC products are used simultaneously, please review [product compatibility](#).
- The software update sent may be more recent than what is indicated.
- For any special requests, Customer Service must be contacted directly.
- The CD being shipped is dependent on active maintenance agreement with PTC.

Download Software by Sales Order Number (SON)

- This application will allow you to view and download the software associated with your specific sales order number.

Software Update Availability

- This application displays all Software Updates that are currently available via the Software Update Tool.
- Although this list shows all products, actual availability within the Software Update Tool will be limited by your company entitlement and product configuration.

Track shipments

- Track your maintenance and software shipments.

PTC Timeout information and patches are located at <http://www.ptc.com/go/timeout/>

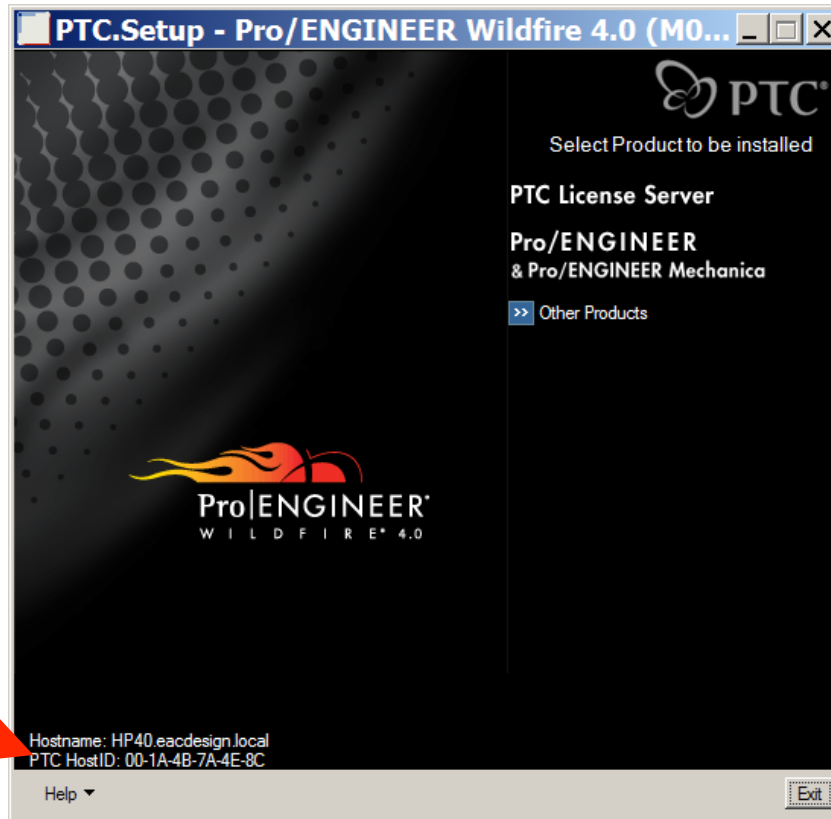
Additional Downloadable Software Updates
For all other software updates, please use the [Order or Download Software Updates](#) tool.

- Division Visual Collaboration Services 6.4
- EFX 3.0
- PTC License Server: FLEXnet Publisher
- FlexPLM
- Harmony GenCAD_Out 5.0
- InterComm EDACompare
- InterComm EDAConduit
- InterComm Expert
- Pro/ENGINEER Wildfire 2.0
- Pro/ENGINEER Wildfire 4.0
- Pro/FLYTHROUGH 21.1
- Pro/INTRALINK

FLEXnet only download is here!



Installation – Server





Installation – Server

How to get your host ID

1. Using windows/DOS

Type ipconfig/all at a command (DOS) prompt

2. Using the PTC utility

/loadpoint/bin directory, run the ptchostid.bat

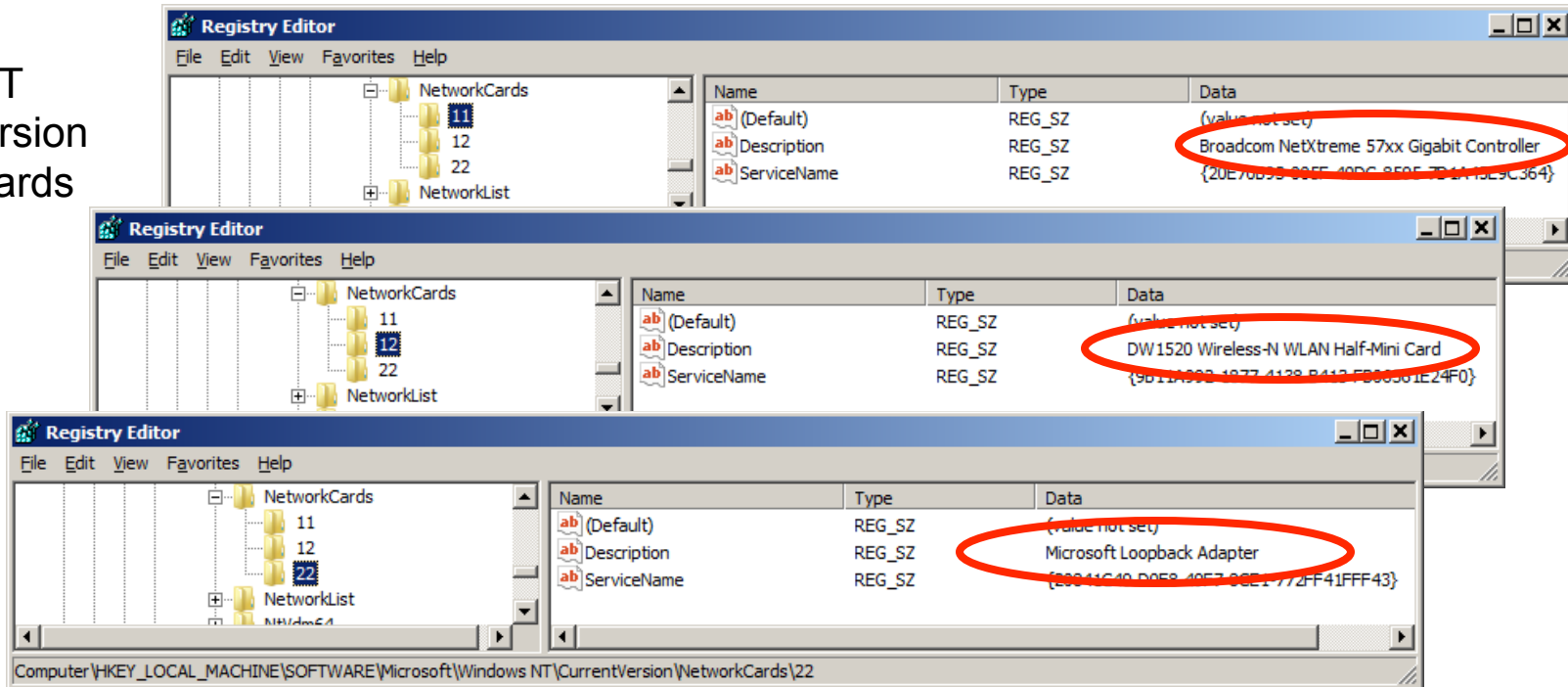


Server Installation issue – when the hostID doesn't match yours...

Registry modification

HKEY_LOCAL_MACHINE
SOFTWARE

Microsoft
Windows NT
Current Version
Network Cards





Server Installation License files

1. Obtaining license files

For new installations, changing servers, new software additions...

<http://www.ptc.com/support/proengineer.htm>

2. Why two license files sent from lm@ptc.com?

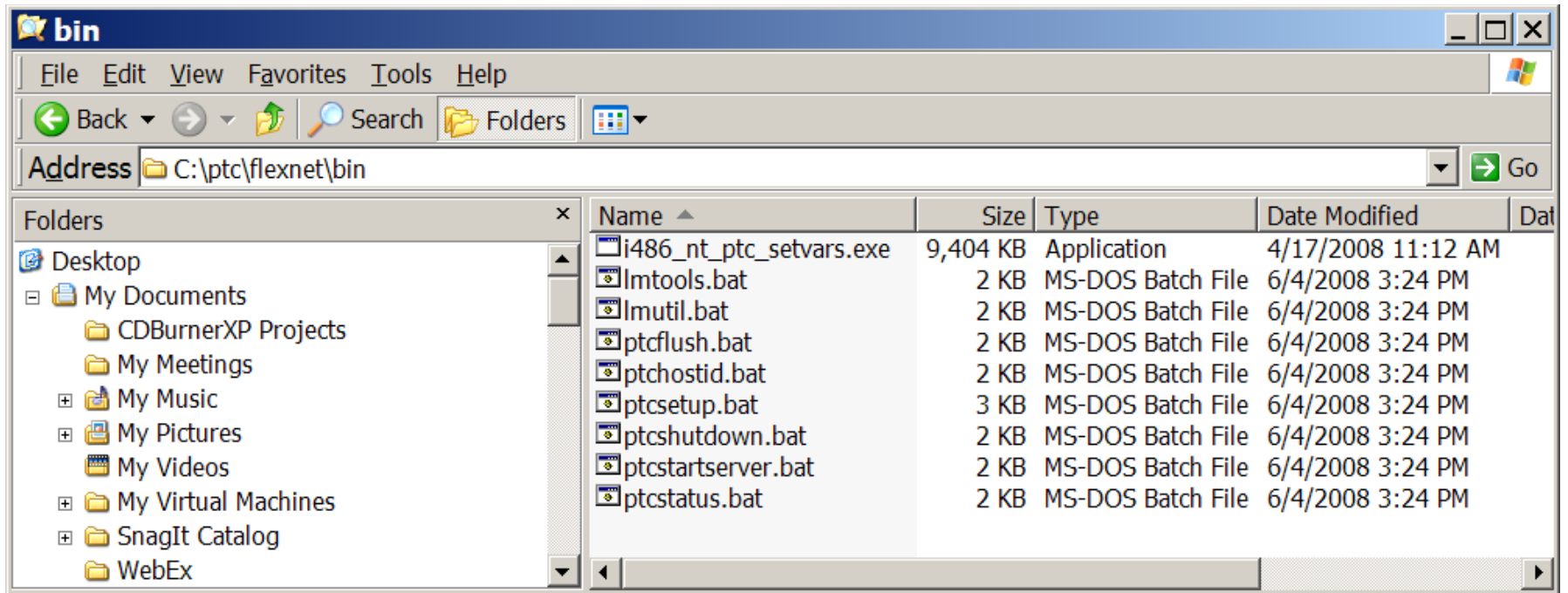
- Standard pack
- “regular” pack

3. Anatomy of a license file



Installation – Server - follow up tasks...

Running system utilities supplied by PTC



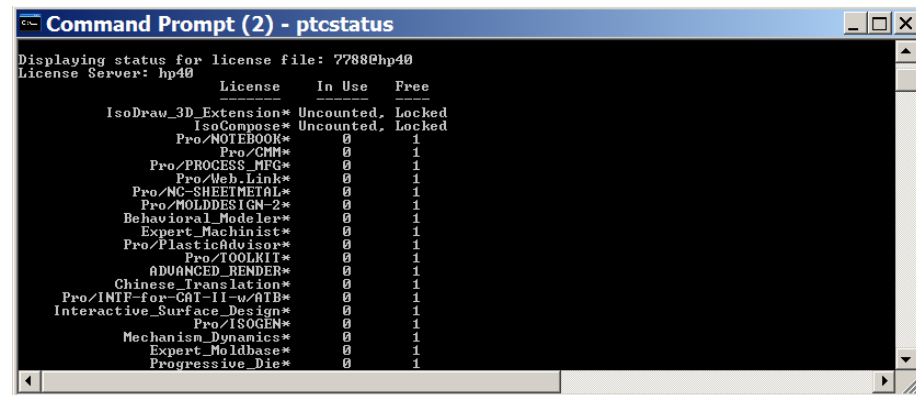
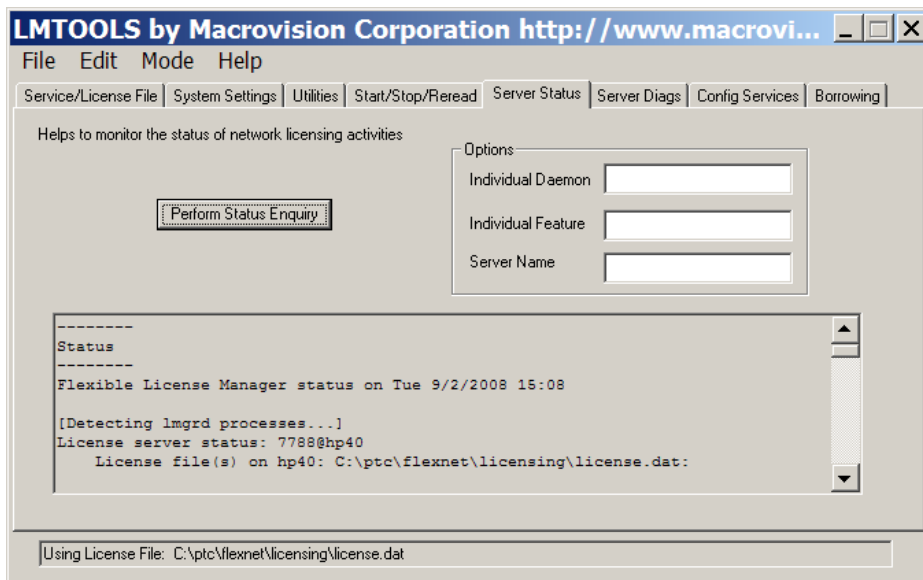
Installation – Server follow up

Running system utilities supplied by PTC to check status of new licenses

Lmutil?

or

ptcstatus?





Installation – Server follow up

Editing PTC supplied utilities: ptchostid.bat

*To make this “pause”, so you can read the output, add the word **PAUSE** prior to the exit command, like this:*

```
"%PRODIR%\%MC%\obj\cpu_id.exe" %1 %2 %3 %4 %5  
:ptc_end  
PAUSE  
exit /B %ERRORLEVEL%
```



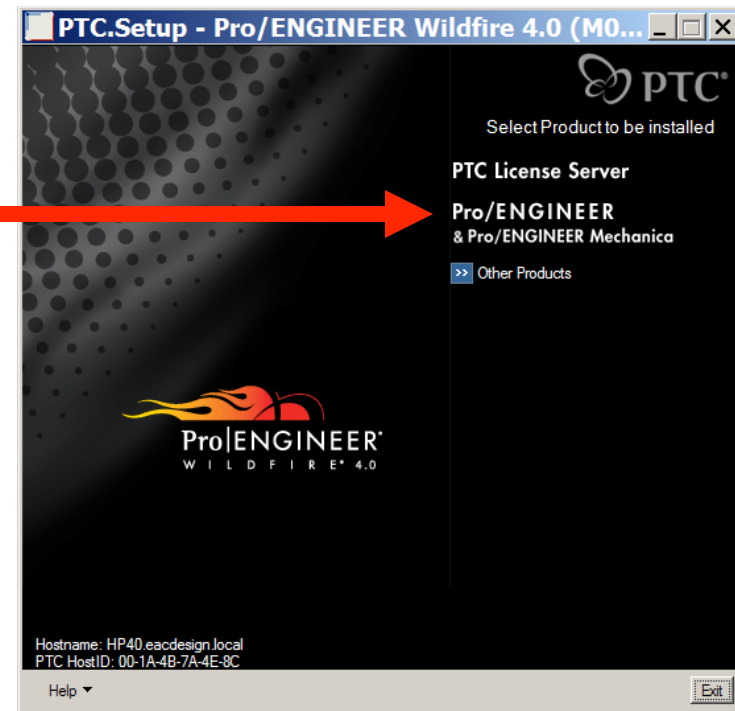
Installation – Preparing for client roll out

- 1. Involve “test” users for new version planning and roll out*
- 2. Communicate to all relevant departments and user groups*
- 3. Training options/plans*
- 4. Consider distributing or a “Distro” site for Creo Elements/Pro & Creo Parametric media onto a common space, or server vs. walking around with media*



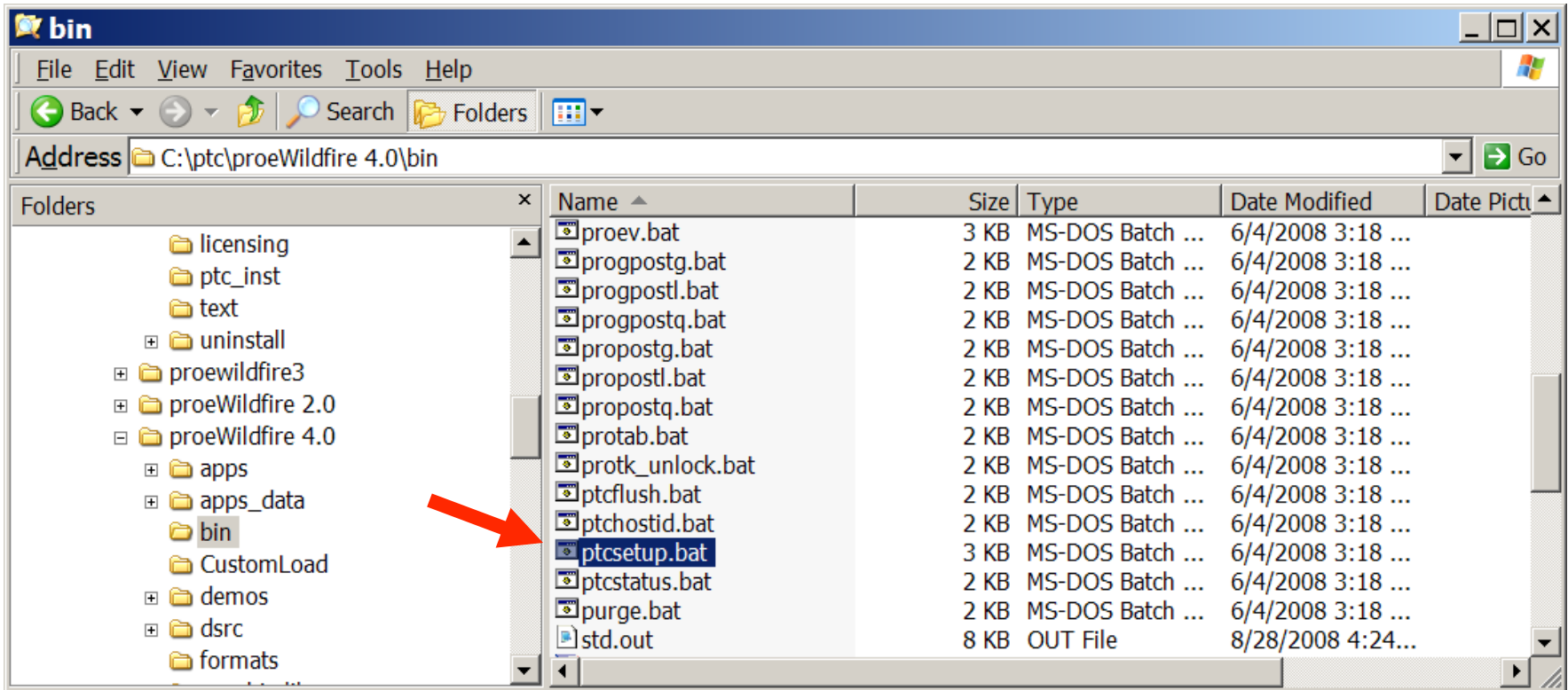
Installation – Client

- 1. Run the installation***
- 2. Choose the install path***
- 3. Point to the server***
- 4. Customize any additional settings***

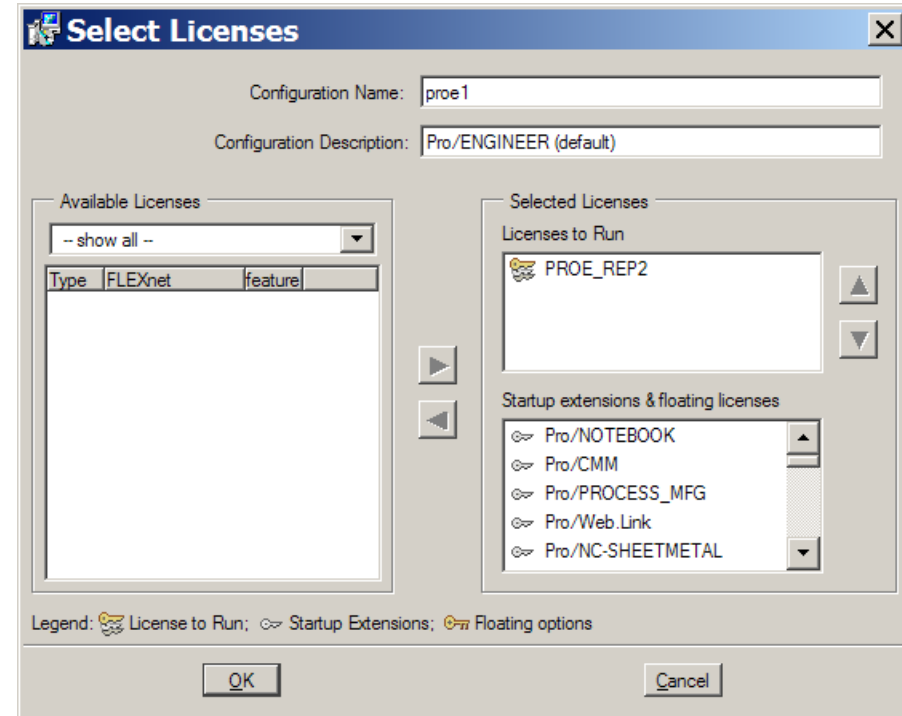
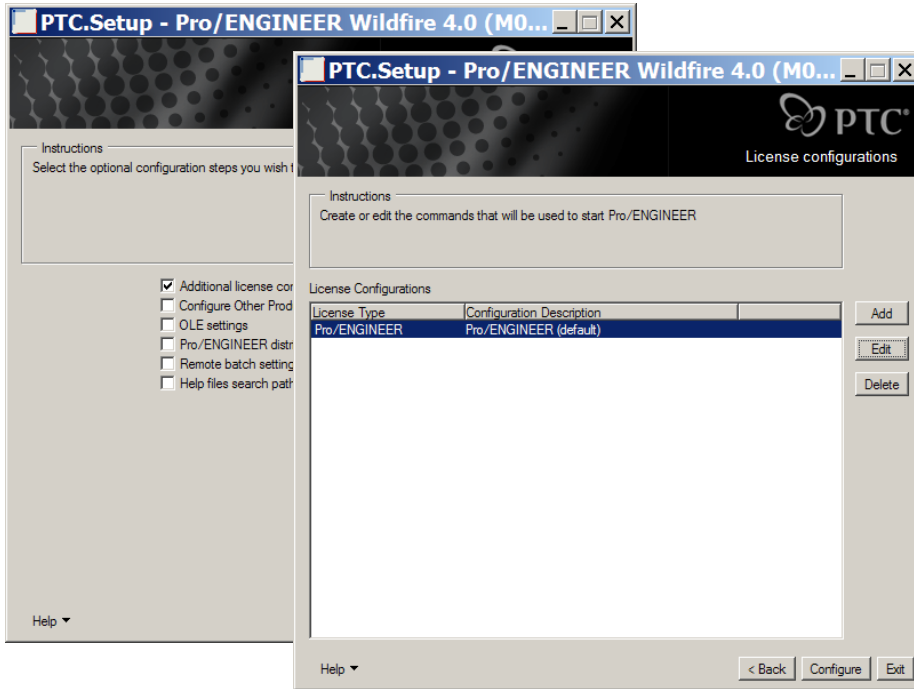




Another useful PTC utility

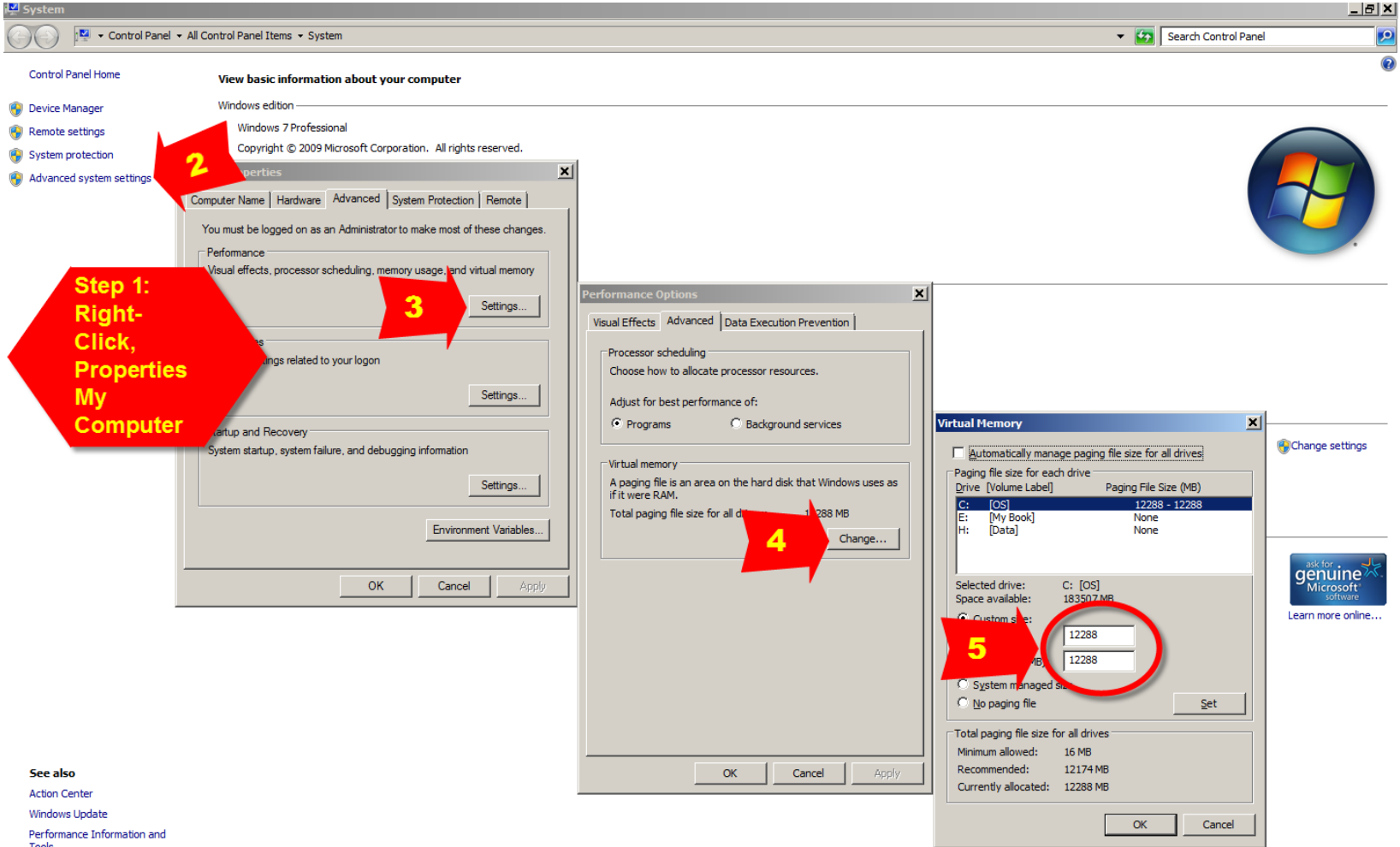


Running ptcsetup.bat



Setting Virtual RAM settings

Windows XP & Windows 7 formula:
Set VRAM value to equal 1.5 times your physical value



Step 1: Right-Click, Properties My Computer

2

3

4

5

Drive	[Volume Label]	Paging File Size (MB)
C:	[OS]	12288 - 12288
E:	[My Book]	None
H:	[Data]	None

Selected drive: C: [OS]
Space available: 183507 MB

Custom sizes:
12288 MB
12288 MB

Total paging file size for all drives:
Minimum allowed: 16 MB
Recommended: 12174 MB
Currently allocated: 12288 MB

See also
[Action Center](#)
[Windows Update](#)
[Performance Information and Tools](#)





User Guides? They exist!

[Reference doc section at ptc.com](#)



Operating Systems

Windows XP Professional 32 & 64 bit

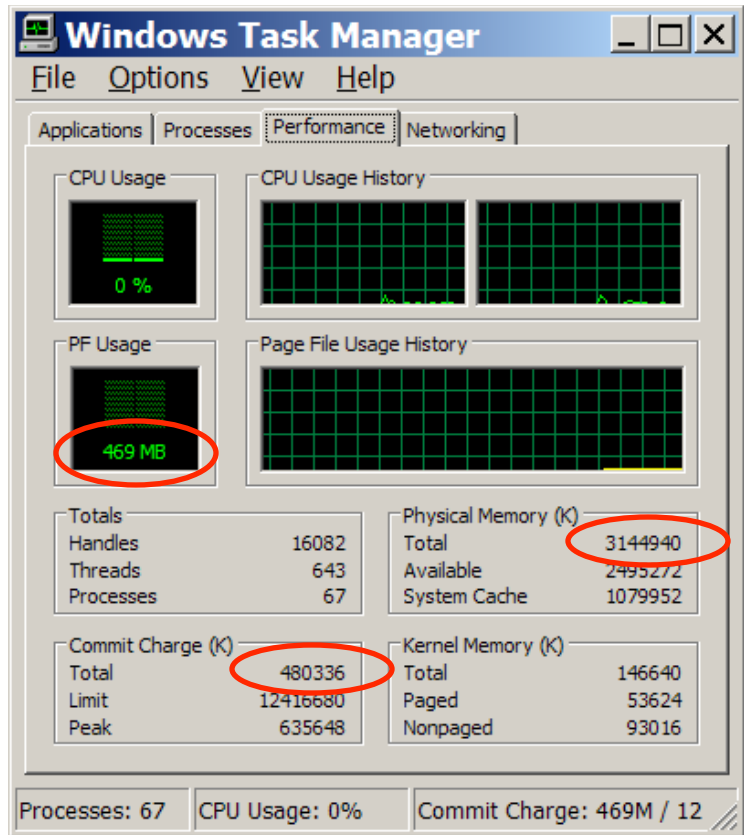
Windows Vista 32 & 64 bit

Windows 7 32 & 64 bit options

- *Only reason to consider 64 bit OS' are if you are currently using more memory than your 32 bit OS can provide*
- *While a 32 bit OS can recognize up to 4GB, the 'per process' limit is still imposed at/around 1.6GB, upwards to 2GB depending on the application*

Analyzing RAM usage

Windows offers a built in tool - Task Manager





Hardware

- 3 main categories:**
- 1. Server**
 - 2. Client desktop**
 - 3. Client laptop**



Hardware

3 main categories:

1. **Server Should be server class vs. workstation or a PC**
2. **Client desktop**
3. **Client laptop**



Hardware

3 main categories:

1. Server

**2. Client desktop Should be
workstation class vs. PC**

3. Client laptop



Hardware

3 main categories:

1. Server

2. Client desktop

**3. Client laptop Should be
workstation class vs. PC**



Workstations vs. PCs

- Geared towards **H**igh **P**erformance **C**omputing (HPC) needs
- Larger bus configurations (GPU bandwidth as well...)
- More memory slots
- Faster & better performing hard drives
- Graphics options meant for tools used for CAD work (Vs. gaming)



Hardware Lifecycle

CONSIDER ADOPTING ONE!

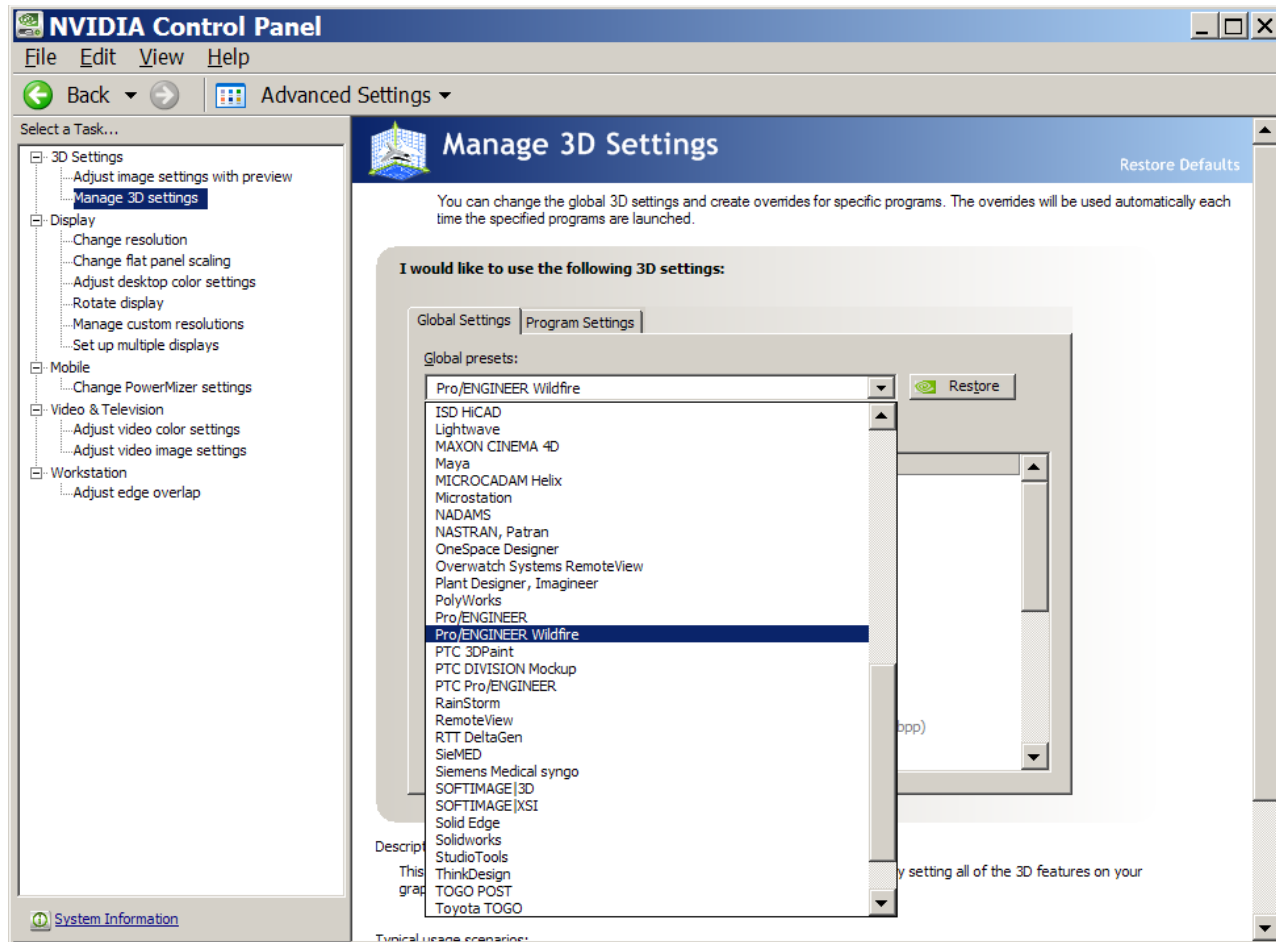


Graphics drivers

- Largely responsible for many Pro/E launch & sketcher behavior issues
- Latest isn't always "greatest" - your mileage will vary
- Check available updates often from OEMs (Nvidia, ATI, Dell, HP, etc)
- Nvidia and ATI both certified by PTC
- See <http://www.ptc.com/WCMS/files/52592/en/proewf4.pdf> for the latest information on support for WildFire 4.0

Graphics drivers

- Leverage “settings list” to match to your application/version





Training

See <http://www.eacdesign.com/TrainingInfo.html>

- **Update classes for new versions (example: Wildfire 4 to Creo Elements/Pro 5.0)**
- **eLearning Libraries – Self paced**
- **EAC *Live!***
- **Learning paths**
 - **If you are a new PTC customer**
 - **For new users to your organizations**
 - **For new extensions you add to your seat configuration**
 - **Refresh/validate**

Training

Free Skills assessment, LMS & PTC-U

How much do you know about PTC products? Are you an expert? Find out now with a [free skills assessment!](#)

Precision LMS (Learning Management System)

http://www.ptc.com/WCMS/files/32047/en/32047en_file1.pdf

Pro/FICIENCY

http://www.ptc.com/appserver/wcms/standards/textoimgothumb.jsp?im_dbkey=68680&icg_dbkey=841

EAC website

<http://www.eacdesign.com/TrainingInfo.html>

Legacy Data

You acquired a new division. They used other CAD packages. How do you deal with the data?

Options: Manually migrate, choose not to work with it, acquire a tool to make it easier, move to the latest version, which has improved ability in the FRT option and import Data Dr.

You just decided to move to the latest version from WF3, or WF2, what do you need to consider?

- 1. GCRI? Backwards compatibility isn't always a possibility*
- 2. Customizations may need some tweaking (Mapkeys, config files, etc)*
- 3. Data testing – bring into session & regenerate your typical data set, most complex data set, etc*



Common parts, shared files & config files

Libraries (mold, material, etc) can be set up, Mold is not included in out of the box, the material library is.

Drawing formats (use format mode, allows “locked control” of title block entities)

Config.pro and Config.sup also, can be set up, not included in out of the box – There is a great resource for this in the help section inside of Creo Elements/Pro

Config.win is a file that captures your icon placement settings. Preserve, or store in a “Safe” spot to keep it if you will be getting a new workstation

Drawing.dtl is generated inside of each drawing file at time of creation

It is not dynamic as config.pro is. So, if you make wholesale changes to your drawing.dtl file, it won't affect existing drawings.



PTC help & documentation

- **Contact EAC**
- Open a PTC case
 - Phone
 - Web tools
- Internal knowledge sharing
- PTC help within Pro/E
- www.ptc.com
 - User guides
 - Tutorials
 - TPIs plus much more
- PTCUser
- Search the web



Questions?